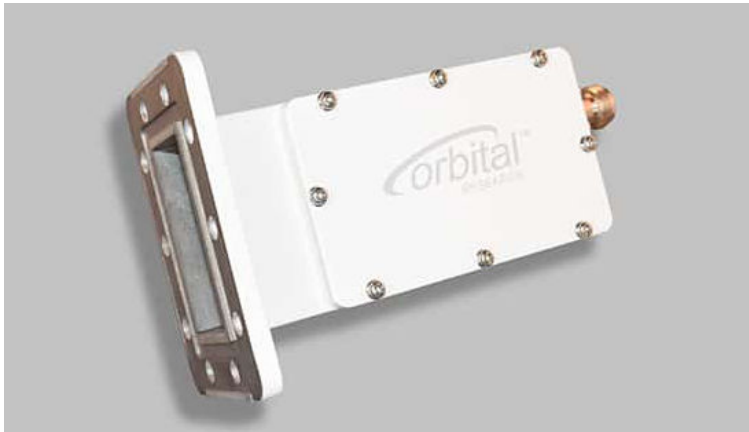


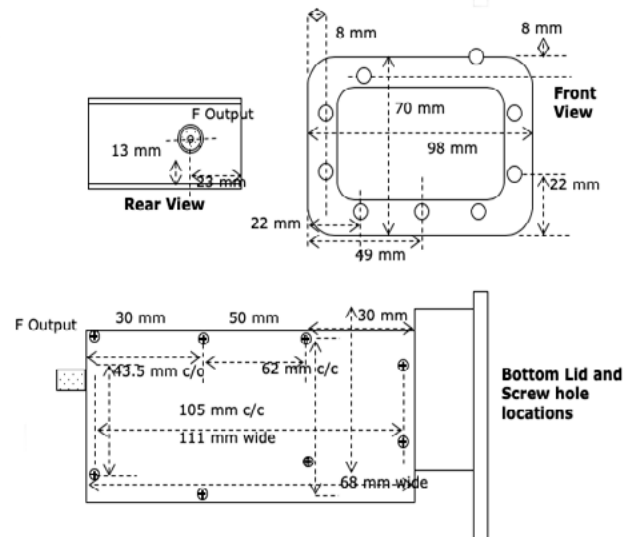
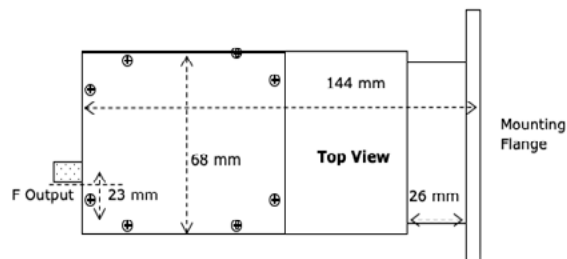
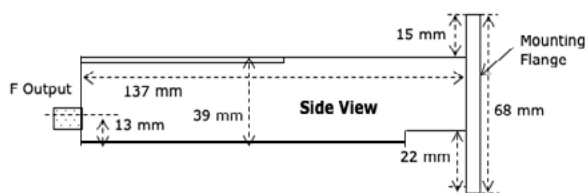


Orbital 3400X Off-the-Shelf External Reference C-Band LNB



This external reference C-band LNB delivers excellent phase noise and local oscillator (LO) stability. It operates from 3.40 to 4.20 GHz, provides 60 dB of gain and delivers a noise temperature of 25K. Built for professional SATCOM and available in 500, 600 and 800 MHz bandwidths, this high-quality off-the-shelf LNB is perfect for most C-band applications – particularly where rain fade is a concern.

- Professional C-band LNB at an entry-level price
- External 10 MHz reference
- Superior noise figure and gain flatness
- Excellent choice to mitigate rain fade



FREQUENCY RANGE

RF Frequency Band (GHz)	3.4 to 4.2
IF Frequency Band (MHz)	950 to 1750
Bandwidth (MHz)	500, 575 or 800
Local Oscillator (GHz)	515
Noise Figure (dB)	25k @ 25C
LO Stability	Locked to external reference
LO Phase Noise	Locked to external reference

10 MHz REFERENCE

Insertion	via input connector
Level	-8 to 0 dBm

VSWR

Input	3.0:1 nominal
Output	2.5:1 nominal @ 75 Ohm

GAIN

Gain (dB)	60 nominal
Ripple	+/- 1 dB over any 36 MHz

OTHER SPECS

Image Rejection	> 45 dBc max
1 dB Compression (dBm)	+10 dBm min
OIP3 (dBm)	+20 dBm min

ENVIRONMENTAL

Operating Temp	-40C to +60C
Non-Operating Temp Range	-40C to +70C
Humidity	100% condensing
MTBF	> 700,000 hours
Standards	RoHS and REACH

POWER¹

Current Draw	300 mA max
Input Voltage Range	+12 to + 24 VDC

MECHANICAL

Weight (grams)	580
Length (mm)	144
Width (mm)	68
Depth (mm)	39
Input Connector	WR-229G
Output Connector	F, N

Please contact Orbital Research for ordering information: sales@orbitalresearch.net

¹ Power supplies must meet 100 mV maximum ripple and noise