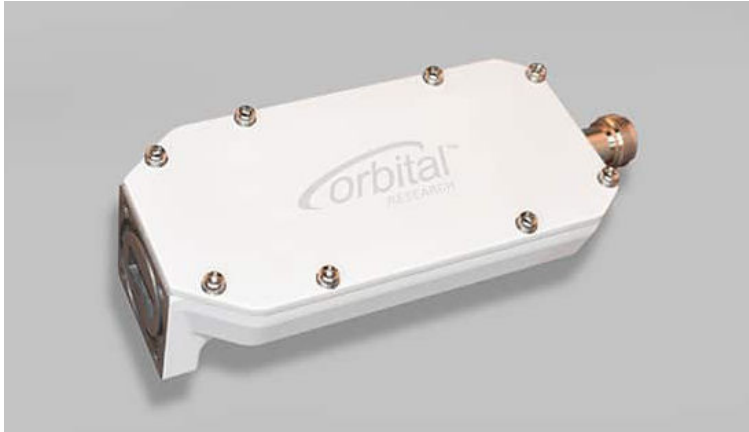




## Orbital 5400X Off-the-Shelf External Reference Ku-Band LNB

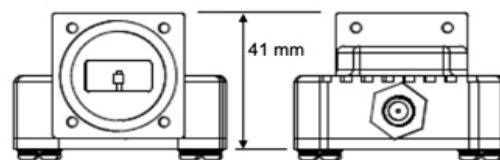
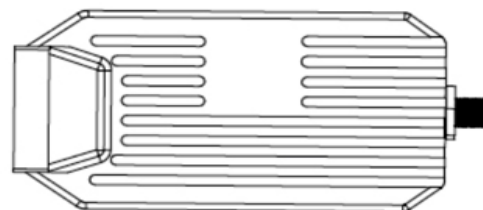
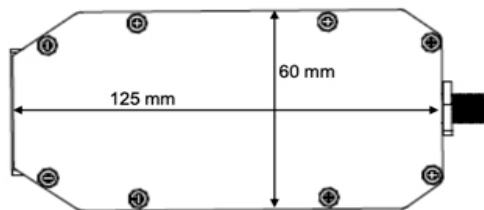


The Orbital 5400X is an excellent entry-level Ku LNB at an economical price.

Built for professional SATCOM, this off-the-shelf LNB offers three Ku frequency ranges for the three ITU regions around the world.

This LNB spans 10.95 GHz to 12.75 GHz with bandwidths of either 500 MHz or 750 MHz – and provides excellent performance. Compare it against your existing Ku LNB and see the difference.

- Professional Ku LNB at an entry-level price
- External 10 MHz reference
- Available for 3 ranges between 10.95 GHz and 12.75 GHz
- Superior noise figure and gain flatness
- Fixed or mobile satellite communications



## FREQUENCY RANGE

RF Frequency Band (GHz)	10.95 to 12.75
IF Frequency Band (MHz)	950 to 1700
Bandwidth (MHz)	750 max
Local Oscillator (GHz)	10.00, 10.75, 11.30
Noise Figure (dB)	0.7 nominal
LO Stability	Locked to external reference
LO Phase Noise	Locked to external reference

## 10 MHz REFERENCE

Insertion	via input connector
Input Level	-8 dBm to 0 dBm

## VSWR

Input	2.2:1 nominal
Output	1.5:1 nominal

## GAIN

Gain (dB)	60 nominal
Flatness	+/- 1.5 dB over the band
Ripple	+/- 1.0 dB over any 36 MHz
Stability	+/- 2 dB over temp & freq

## OTHER SPECS

Image Rejection	> 45 dBc max
1 dB Compression (dBm)	+10
OIP3 (dBm)	+20

## ENVIRONMENTAL

Operating Temp	-40°C to +60°C
Humidity	100% condensing
MTBF	> 175,000 hours
Standards	RoHS and REACH

## POWER<sup>1</sup>

Current Draw	220 mA
Input Voltage Range	+12 to +24 VDC

## MECHANICAL

Weight (grams)	350
Length (mm)	125
Width (mm)	60
Depth (mm)	41
Input Connector	WR-75
Output Connector	F, N

## OPTIONS

Custom LO's available

Please contact Orbital Research for ordering information: [sales@orbitalresearch.net](mailto:sales@orbitalresearch.net)

<sup>1</sup> Power supplies must meet 100 mV maximum ripple and noise