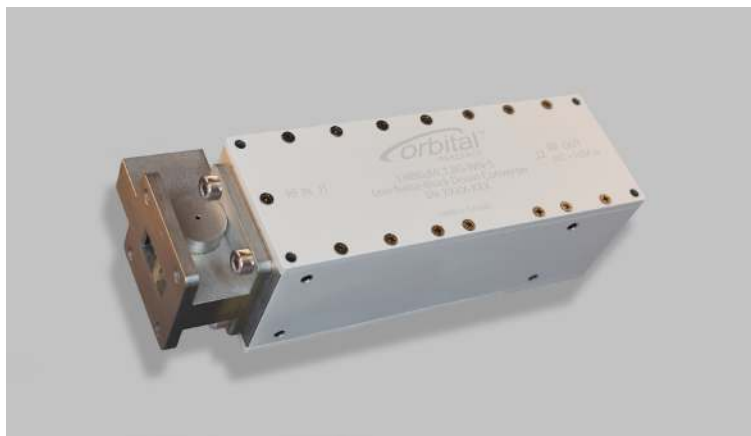




Orbital Ku-Band Multi-LO LNB

Ku-band LNB with multiple local oscillators and external isolator



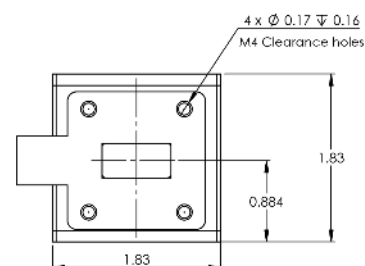
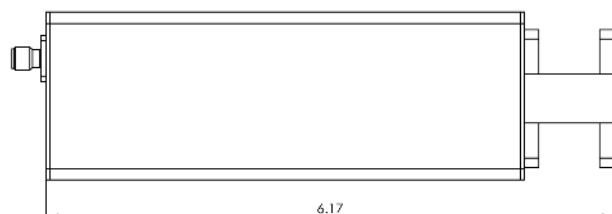
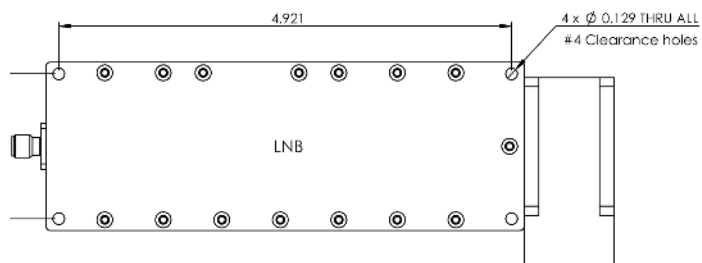
Orbital Research's Ku-Band Multi-LO low noise block downconverters are built for terrestrial and airborne satellite terminals. These external reference LNBs offer high performance and stability as well as exceptionally low phase noise. With multiple LO frequencies available and up to 1 GHz of bandwidth, they let you switch between different Ku frequency bands and support several services with the same hardware.

Orbital Ku-Band Multi-LO LNB features

- Local or remote Ku band switching
- Low phase noise and high data throughput
- Low noise figure <0.8 dB
- Highly linear for higher-order modulation schemes
- Options for extreme temperatures
- Options for 1 or 2 GHz of IF bandwidth

Applications

These Ku-band LNBs are used for both military and commercial satellite communications (SATCOM) applications, including teleports, large earth stations, transportable and comms-on-the-move. Aeronautical versions are available to help carriers meet rising demand for bandwidth and in-flight broadband connectivity.



FREQUENCY RANGE

RF Frequency Band (GHz)	10.7 to 12.75
IF Frequency Band (MHz)	950 to 2150
Local Oscillator (GHz)	9.75, 10.0, 10.25, 10.3, 10.75 or 11.0
Noise Figure (dB)	0.8 @ 23C typical
LO Stability	Locked to external reference
LO Phase Noise	Locked to external reference
Band Switching	Voltage

10 MHz REFERENCE

Insertion	Multiplexed on IF
Input Level	-8 to +8 dBm

VSWR

Input VSWR	1.4:1
Output VSWR	1.3:1

GAIN

Gain dB	60 dB
Flatness	+/- 0.5 over 10 MHz
Ripple	+/-2.5 dB over 1 GHz
Stability	+/-3 dB over temperature

ENVIRONMENTAL

Operating Temp Range	-40C to +65C
Non-Operating Temp Range	-50C to +80C
Humidity	100% condensing
Standards	MIL-STD-810F for vibration

MECHANICAL

Weight	< 675 grams
Length	167 mm (with SMA)
Width	47 mm
Depth	47 mm
Input Connector	WR-75
Output Connector	SMA, N

POWER

Current Draw	300 mA at 17 VDC
Input Voltage Range	+17 to +24 VDC

OPTIONS

Push-button or RS 485 band switching
Custom gain settings per band
Extended temperature ranges

OTHER SPECS

Image Rejection	> 40 dBc max
LO Leakage	< -40 dBm
1 dB Compression	+ 13 dBm min
OIP3	+25 dBm min

For more information or to order, please contact us at sales@orbitalresearch.net or 1 (604) 419-8585.